

RAILWAY HOUSE  
2 REMPSTONE ROAD  
SWANAGE  
DORSET  
BH19 1DW  
Opposite the Steam Railway Station



Tel: 01929 423333  
(24 hours)  
Web: [www.milesandson.co.uk](http://www.milesandson.co.uk)  
Email: [property@milesandson.co.uk](mailto:property@milesandson.co.uk)



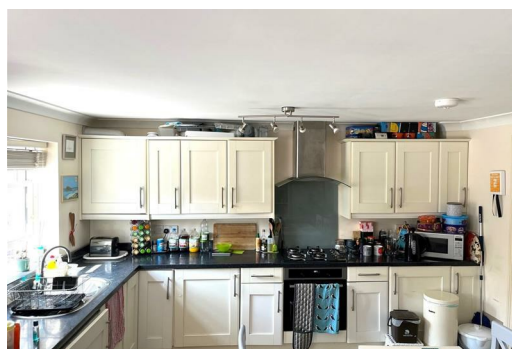
## Kings Road East, Swanage, Dorset BH19 1ES

\* BUY TO LET INVESTMENT OPPORTUNITY! \* Purpose-built town centre FIRST FLOOR FLAT being sold with TENANTS IN SITU currently paying £830 pcm. 2 bedrooms, south facing open plan kitchen/diner and lounge, bathroom/W.C., gas central heating, double glazed windows.

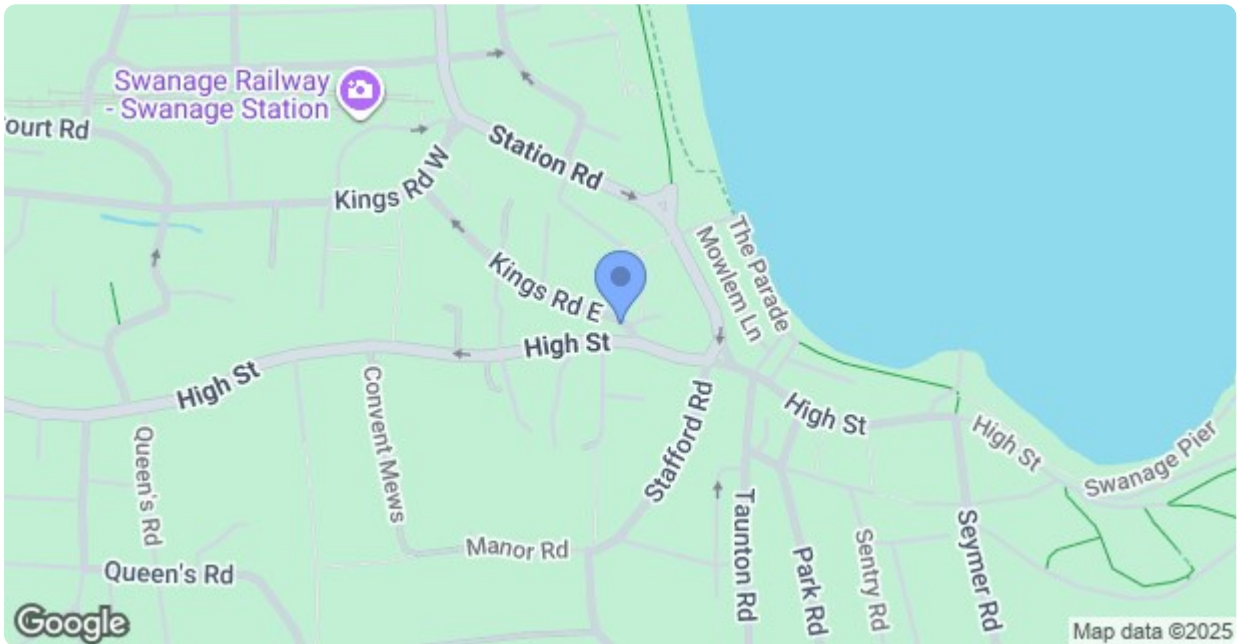
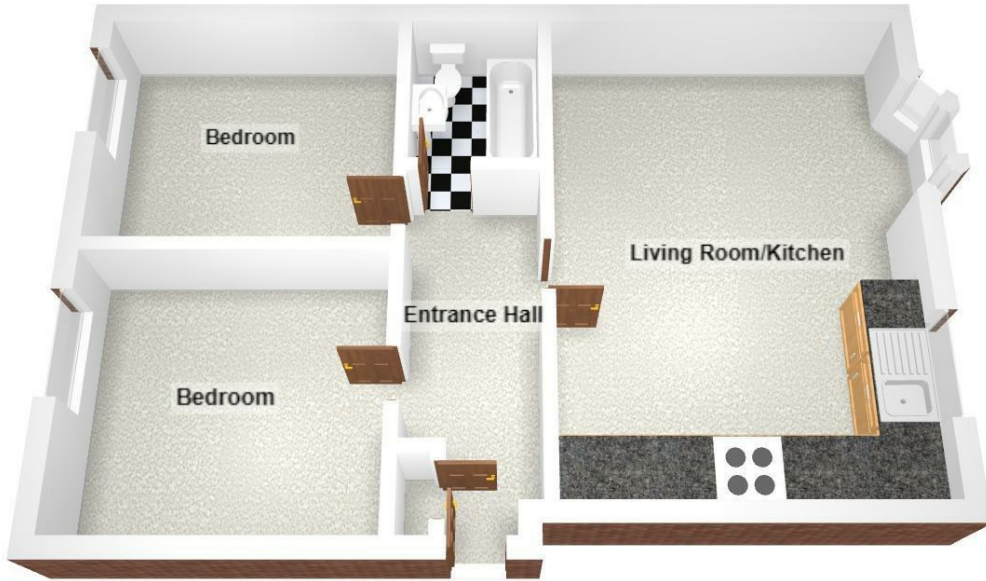
- BUY TO LET INVESTMENT OPPORTUNITY
- 2 bedrooms
- Gas central heating
- Purpose-built first floor flat with tenants in situ
- South facing kitchen/diner and lounge
- Double glazing
- Current rent of £830 pcm.
- Bathroom/W.C.
- Lettings and pets permitted

**Asking Price £220,000**

Kings Road East, Swanage, Dorset BH19 1ES







Energy Efficiency Rating		
	Current	Potential
<i>Very energy efficient - lower running costs</i>		
(92 plus) <b>A</b>		
(81-91) <b>B</b>		
(69-80) <b>C</b>		
(55-68) <b>D</b>		
(39-54) <b>E</b>		
(21-38) <b>F</b>		
(1-20) <b>G</b>		
<i>Not energy efficient - higher running costs</i>		
<b>England &amp; Wales</b>	EU Directive 2002/91/EC	